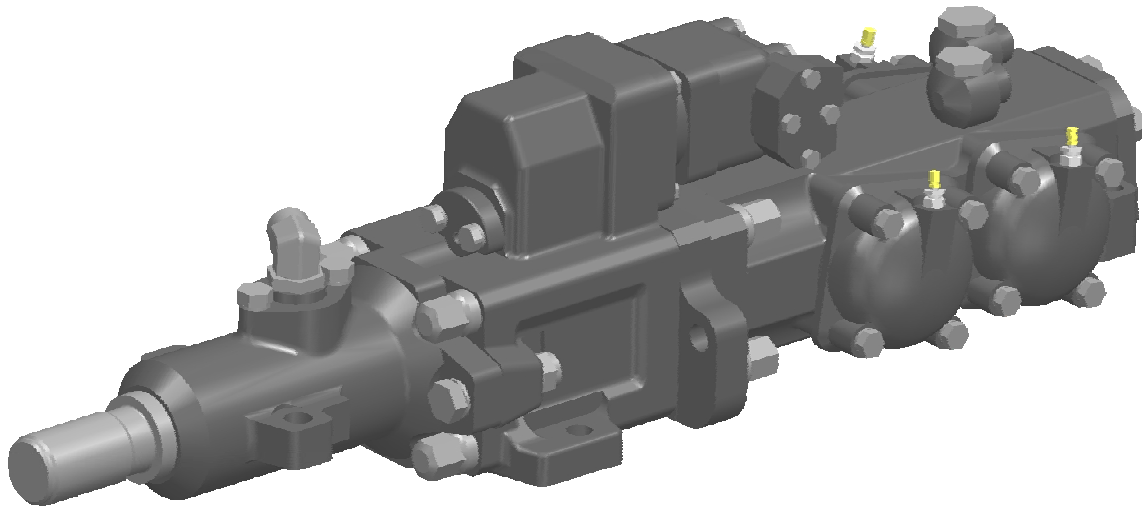


Hydraulic rock drill HL 1010



APPLICATION

HL 1010 series hydraulic rock drill is designed for bench drilling with 45 - 60 mm diameter drill steels and 76 - 87 mm tubes. It is used on hydraulic crawler drills drilling 89 - 140 mm diameter holes in quarries, open pit mines and large construction worksites. HL 1010 is also used in underground production drill rigs.

MAIN CHARACTERISTICS

HL 1010 is a heavy hydraulic percussive rock drill with independent rotation and a side flushing system. It is built of three body modules which are tied with four short tie-rods. The design is patented.

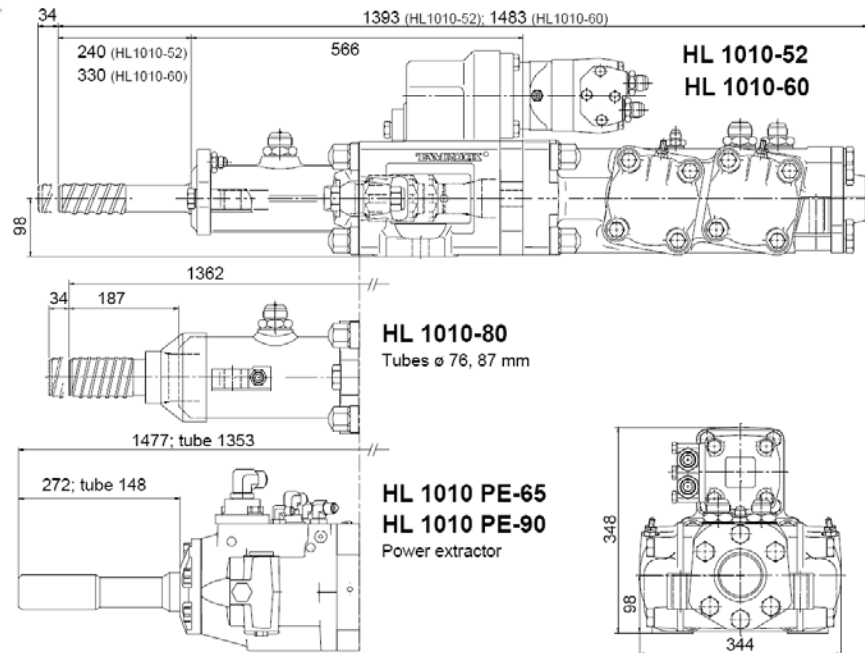
APPLICATION

Hole diameter	
With rods	89 - 127 mm
With tubes	89 - 140 mm
Power class	25 kW
Percussion rate	33 - 40 Hz
Operating pressure	
Percussion	90 - 160 bar
Rotation (max)	200 bar
Rotation motor type	OMT
Drill steels	250/315/400/500 highly recommended
76 - 87 mm	
Tubes	
Shanks	
45 mm rods	T45-670
51 mm rods	T45/51-670 T45/51-590
60 mm rods	ST58/GT60-760
76 mm tubes	ST58-635 ST58-760
87 mm tubes	ST68-635 ST68-760

Please see separate shank list for various models and bearing diameters.

Hydraulic rock drill HL 1010

GENERAL DIMENSIONS



TECHNICAL DATA

MAIN DIMENSION

Length	1 153 mm
Profile height	250 mm
Width	344 mm
Weight	290 - 350 kg

Motor type 4	OMT 500
Hole diameter	115 - 140 mm
Torque (at 160 bar)	2 540 Nm
Rotation speed	0 - 80 rpm
Flow (at max speed)	90 l/min

ROTATION MECHANISM

Motor	Orbit type (4 options)
Motor type 1	OMT 250
Hole diameter	76 - 89 mm
Torque (at 200 bar)	1 630 Nm
Rotation speed	0 - 150 rpm
Flow (at max speed)	81 l/min

FLUSHING

Max pressure (air/water)	20 bar
--------------------------	--------

ACCUMULATORS

Accumulator gas	Nitrogen N2
High pressure (HP)	50 bar
Low pressure (LP)	4 bar
Filling valve	Vg8 DIN 7756

Motor type 2	OMT 315
Hole diameter	89 - 115 mm
Torque (at 200 bar)	2 115 Nm
Rotation speed	0 - 100 rpm
Flow (at max speed)	70 l/min

SHANK LUBRICATION

Air flow (at 6 bar)	200 - 300 l/min
Pressure	4 - 7 bar
Oil consumption	400 - 850 g/h

Motor type 3	OMT 400
Hole diameter	120 - 140 mm
Torque (at 180 bar)	2 005 Nm
Rotation speed	0 - 80 rpm
Flow (at max speed)	70 l/min

OIL RECOMMENDATION

Oil operating temperature	+40 - +60 °C
Oil recommendation	See Sandvik drill rigs lubricant recommendation for detailed information

OPTIONS

- Power extractor (see separate specification)
- Special tools for HL 1010/complete set, ID 151 737 78
- Special tools for HL 1010/field tool set, ID 880 822 99

Sandvik Mining and Construction reserves the right to change this specification without further notice.